



## ONDERBREKING VAN ELEKTRIESE TOEVOER

Area (Slegs waar kennis gegee is):

**Hoogstraat (Tussen Adderley- & Trappestraat); Porterstraat (Tussen Russel- & Tulbaghstraat) & Kerkstraat (Tussen Porter- en Napierstraat).**

Datum: **Woensdag, 13/11/2024 vanaf 08:30 tot 16:30**

Hiermee word u in kennis gestel dat die elektrisiteitstoevoer onderbreek sal word soos hierbo genoem ten einde dringende instandhoudingswerk uit te voer aan die elektrisiteitsverspreidingsnetwerk. Geen versekering kan gegee word dat die elektrisiteitstoevoer vir die volle tydskuur af sal wees nie, u moet dit dus gedurende die genoemde tye as LEWENDIG beskou.

NB.: Geen verbruiker mag enige kragopwekkers op die netwerk koppel, indien daar nie aan die Regulasie vir die gebruik van kragopwekkers voldoen word nie (Regulasie SANS 8528/12). Indien 'n verbruiker wel 'n kragopwekker gebruik moet hy die kontakpersoon daarvan in kennis stel.

Kontakpersoon: **Mnr. H Schreuder : [hschreuder@bvm.gov.za](mailto:hschreuder@bvm.gov.za)**

Indien die onderbreking van u elektrisiteitstoevoer uitgestel moet word as gevolg van onvoorsiene omstandighede (weerstoestande, ens.), sal die beplande werke herskeduleer word vir 'n ander werksdag (Maandag – Vrydag). In sò 'n geval sal nuwe kennisgewings weer uitgestuur word.

## INTERRUPTION OF ELECTRICAL SUPPLY

Area (Only where notices were given):

**High Street (Between Adderley- & Trappe Street); Porter Street (Between Russel- & Tulbagh Street) & Church Street (Between Porter- en Napier Street).**

Date: **Wednesday, 13/11/2024 from 08:30 to 16:30**

You are hereby notified that the electricity supply will be interrupted as mentioned above in order to do urgent maintenance work on the electricity distribution network. Assurance cannot be given that the electricity supply will be off for the entire period and you should therefore treat it as LIVE during this timeslot.

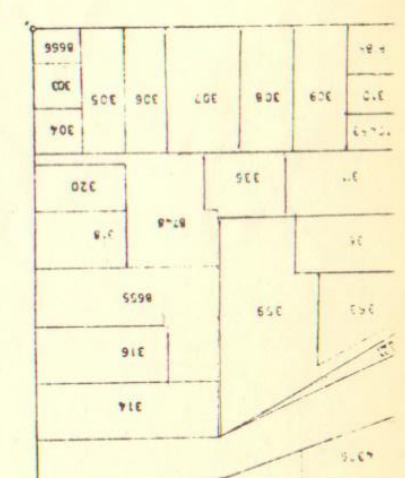
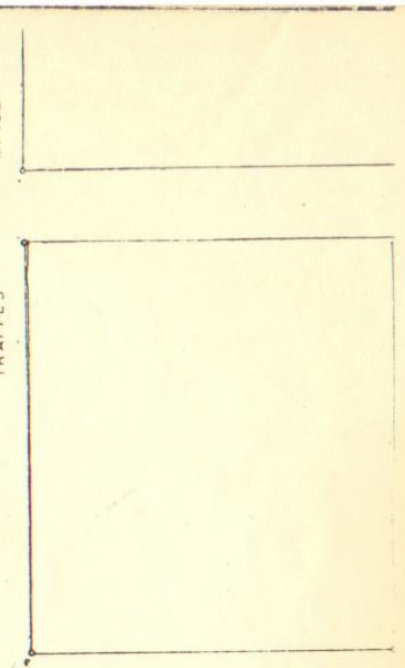
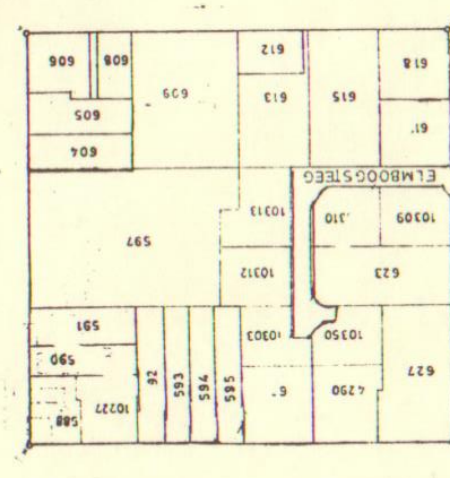
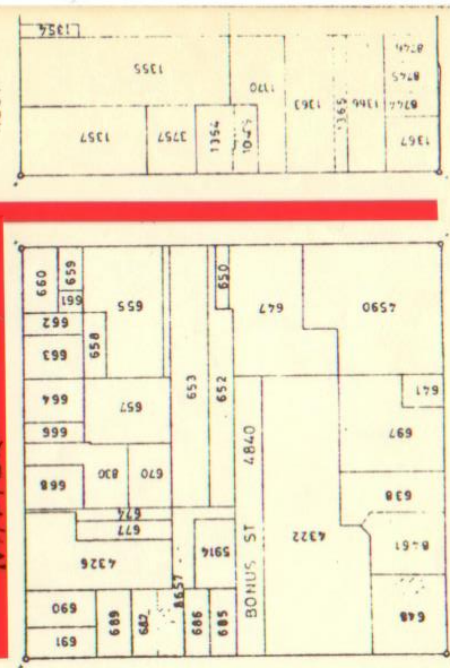
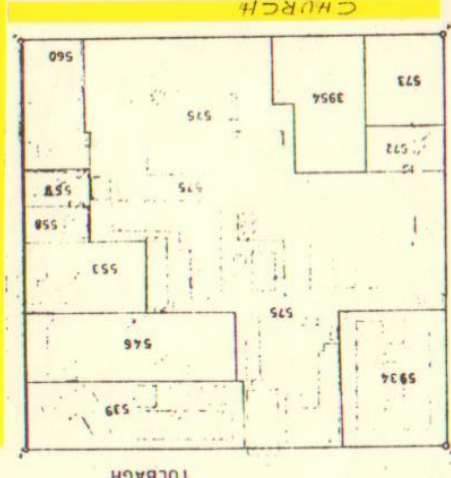
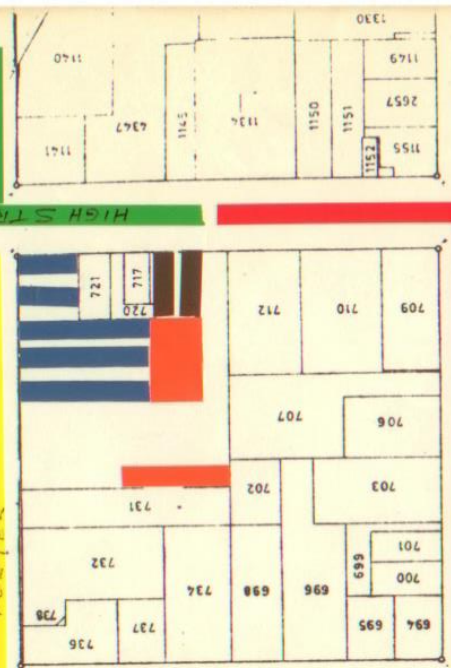
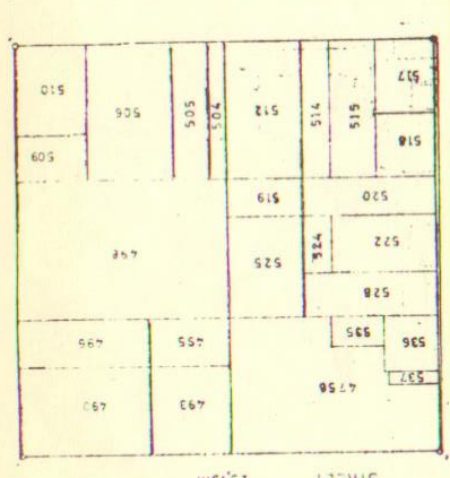
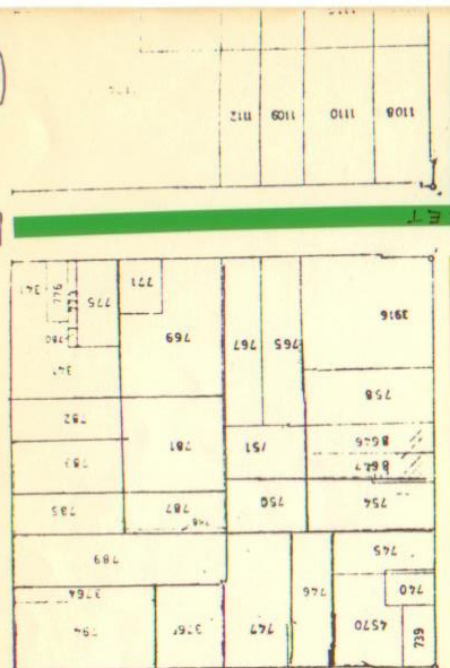
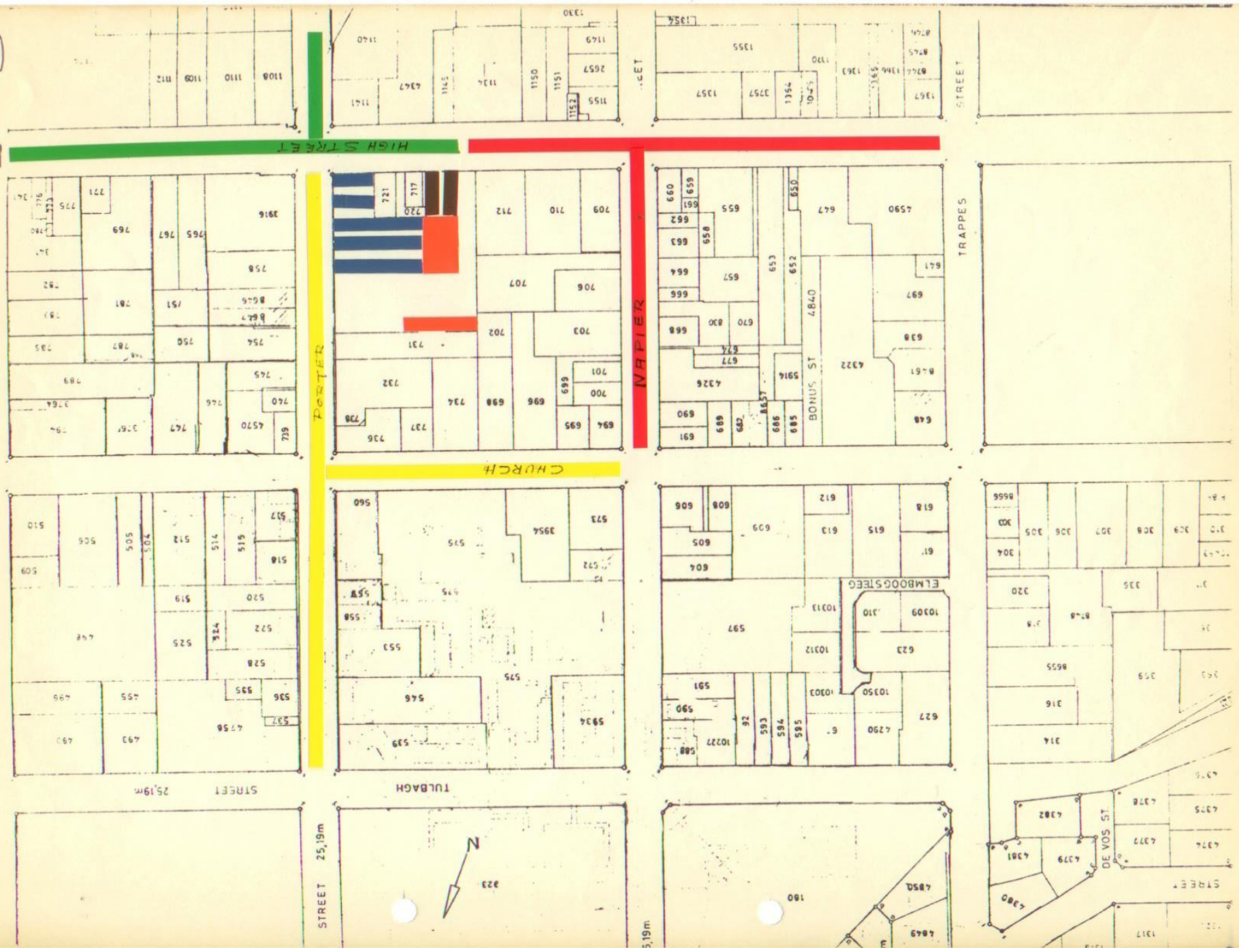
PS.: Generators may not be connected by consumers to the electricity network, unless the Regulations for the use of generators are met (SANS Regulation 8528/12). If a consumer is using a generator, he/she must notify the contact person.

Contact person: **Mr. H Schreuder : [hschreuder@bvm.gov.za](mailto:hschreuder@bvm.gov.za)**

If the interruption of your electricity supply is postponed due to unforeseen circumstances (weather, etc.), the planned work will be rescheduled for another working day (Monday - Friday). In this case, new notices will be sent out again.

Nov. 92 After  
Aug 99 Before

# PICK 'n PAY SUB



STREET 25,19m

STREET 25,19m

5,19m

STREET

TRAPPES

WAPIER

PORTER

TULBAGH

ELMBOOGSTEEG

DE VOS ST